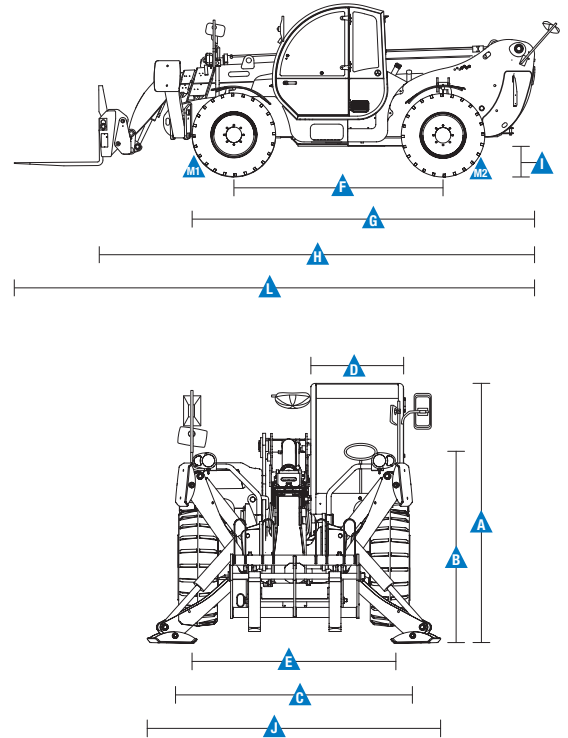


Specifications

Model	GTH™-4017 SX & GTH™-4017 EX	
Measurements	Metric	Imperial
Lifting height maximum with outriggers	17.19 m	56 ft 5 in
Lifting height maximum without outriggers	16.72 m	54 ft 10 in
Lifting capacity maximum	4,000 kg	8,818 lbs
Lift capacity at maximum height	2,000 kg	4,409 lbs
Lift capacity at maximum reach	700 kg	1,543 lbs
Forward reach maximum	13.33 m	43 ft 9 in
Reach at maximum height	3.56 m	11 ft 8 in
A Height	2.44 m	8 ft
B Height at steering wheel	1.60 m	5 ft 3 in
C Width	2.32 m	7 ft 7 in
D Cab width	78 cm	2 ft 7 in
E Track	1.92 m	6 ft 4 in
F Wheelbase	2.95 m	9 ft 8 in
G Length at front wheels	4.83 m	15 ft 10 in
H Length at fork-holder plate	6.57 m	21 ft 7 in
I Ground clearance	35 cm	1 ft 2 in
J Overall width, outriggers extended	2.89 m	9 ft 6 in
L Overall length	7.77 m	25 ft 6 in
M1 Obstruction angle		40°
M2 Departure angle		46°

Measurements



Productivity

Inside/outside turning radius	2.42 m/4.65 m	8 ft 1 in/15 ft 3 in
Break-out force*	6,000 kg	13,228 lbs
Towing capacity at dynamometer*	6,000 kg	13,228 lbs
Drive speed max.	32 km/h	20 mph
Fork-holder plate rotation		138°
Chassis levelling on front axle		+/- 7°
Tyres (DIN 70361)	405/70 24" PR14 8 holes wheel disc	
Lifting/lowering speed**	13 sec./8 sec.	
Extension/retraction speed**	22 sec./13 sec.	

Power

Engine	Perkins 1104 D-44T turbo diesel 99 hp (74 kW), stage III	
Transmission	Hydrostatic variable displacement pump linked to variable displacement motor. Both piston type.	
Service pumps	Boom & control system gear pump type: 280 Bar, 99L/min. Service brake gear pump type: 200 Bar, 46 L/min.	
Petrol tank capacities	135 L	30 gal
Engine oil capacities	7 L	1.5 gal
Hydraulic oil tank capacities	150 L	33 gal

Weight***	11,900 kg	26,235 lbs
------------------	-----------	------------

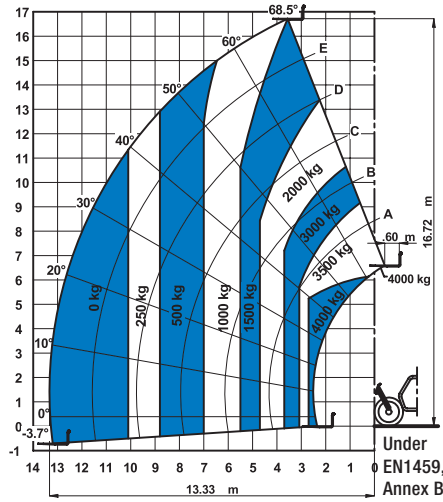
Standards Compliance

EU Machinery Directive 2006/42/EC
 Operating cab conforms to ISO3471 (ROPS) and ISO3449 (FOPS)
 Low emission engine conforms to EU Directive 97/68/EC Stage III and 2004/26/EC
 Noise emission conforms to EU Directive 2000/14/EC (LpA=83 dB, LwA=103dB)
 Vibration levels according to EN13059:2002 (hand-arm <2.5m/s², whole body 0.44m/s²)

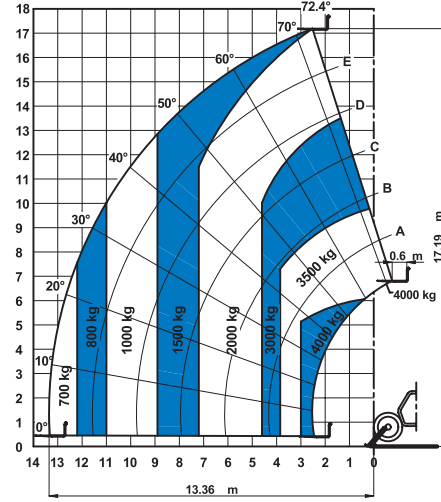
* With 800 L shovel SAE J 732/80
 ** Without load
 *** Weight will vary depending on options and/or country standards

Load Charts

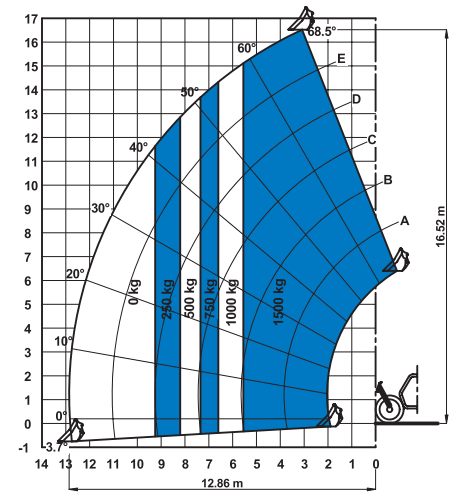
On wheels with forks



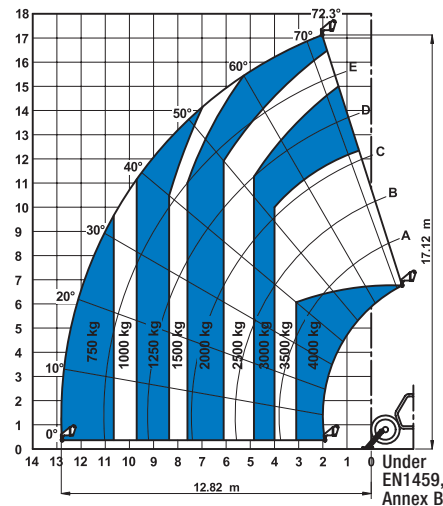
On outriggers with forks



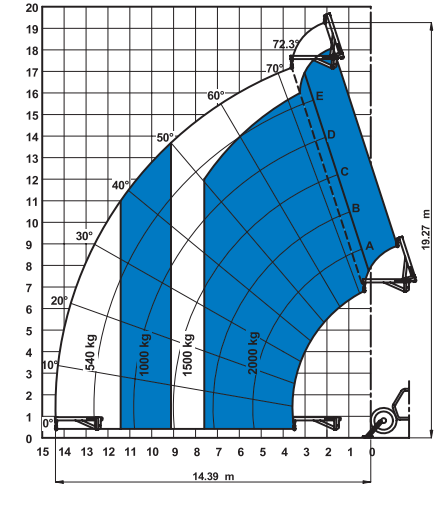
On wheels with 800 L shovel



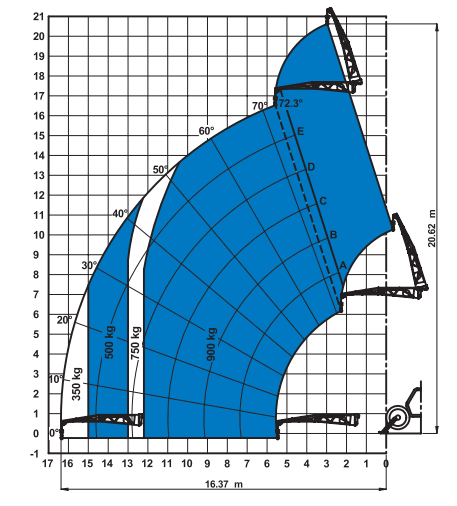
On outriggers with 5t fixed hook on plate



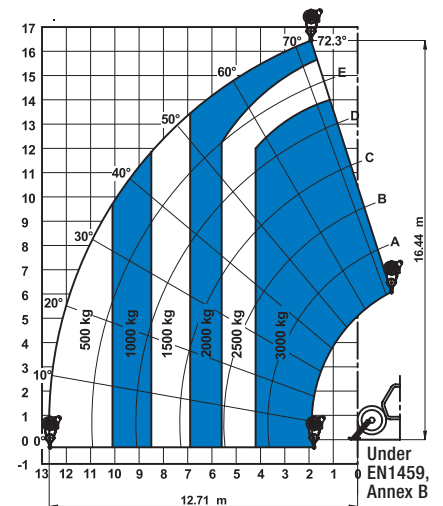
On outriggers with 2m jib (mechanical)



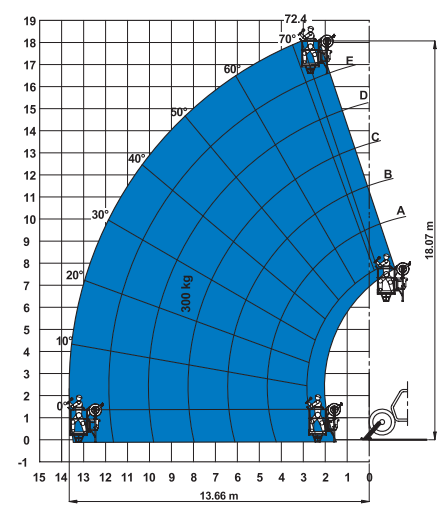
On outriggers with 4m jib (mechanical/hydraulic)



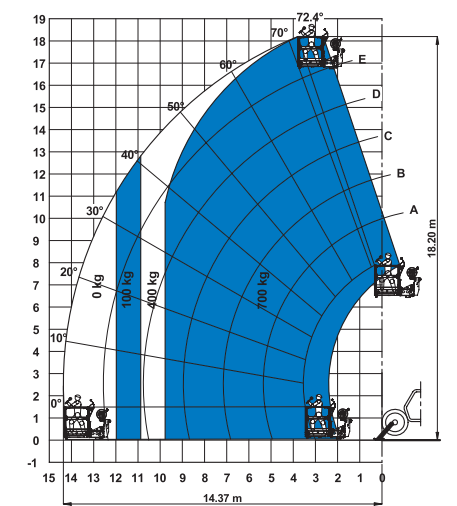
On outriggers with 3t hydraulic hoist



On outriggers with fixed work platform



On outriggers with rotating extendable work platform



Features

Standard Features	Standard Features	Options & Accessories
-------------------	-------------------	-----------------------

Measurements

- 4,000 kg (8,818 lb) maximum lift capacity
- 17.19 m (56 ft 5 in) maximum lift height
- 13.33 m (43 ft 9 in) maximum forward reach

Productivity

- 4 x 4
- 4 - wheel steer
- 3 steering modes:
 - front wheel steer
 - crab steer
 - coordinated steer
- Hydraulic line on boom
- Power assisted steering
- Front outriggers
- Hydrostatic transmission with variable displacement pump and motor
- Mechanical 3x1 joystick on GTH™-4017 SX
- **Electro-proportional 4x1 joystick on GTH™-4017 EX**
- Limited slip differential on front axle
- Chassis levelling on front axle +/- 7°
- Attachment holder plate – mechanical coupling
- Two-section door (glass upper/steel lower)
- Angle and length indicators on boom correspond to load charts
- Adjustable suspended seat with operator detection seat contact switch
- Battery disconnection switch
- Large diameter steering wheel
- Front & rear windscreen wipers
- Sunshield
- Roof protection grid
- Two side view mirrors & rear fish eye mirror

Standard Features

- Front & rear lights
- Side mounted engine for easy access to components
- Oil immersed, multi-disc brakes on both axles
- Self activated parking brake hydraulically released
- Lockable fuel tank
- Maintenance collar
- Rear wheel alignment system
- Hydraulic inching by service brake pedal action
- Road/jobsite switch
- Stability and load control system:
 - Load moment indicator with LEDs
 - Audible alarm
 - Automatic lock-out of boom extension and lowering
 - Automatic lock-out of stabilisers
 - Automatic lock-out of rear axle

Power

- Perkins turbo diesel 99 hp (74 kW), stage III

Tyres

- 405/70-24" PR14, 8 holes wheel disc (DIN 70361)



Options & Accessories

Productivity

- Air conditioning
- Main electrical line on boom
- Additional electrical line with cable reel on boom
- Additional hydraulic line on boom
- Hydraulic quick coupling for attachments
- GM-1 Articulation for Manitou attachments
- Adjustable spotlight on boom
- Adjustable spotlight on cab
- Windshield protection grid
- Wiper on cab roof
- 6 t towing hook
- Rear electrical socket
- Biodegradable hydraulic oil
- 10 t hydraulic jack + 24 mm box wrench
- Concrete mixing bucket pre-arrangement on GTH™-4017 EX
- Work platform attachment pre-arrangement on GTH™-4017 EX

Tyres and Wheels

- Spare wheel 405/70-24" PR14

Attachments

- Floating forks L 1200 mm, section 120x50 mm
- Floating forks L 1200 mm, section 100x50 mm (UK only)
- FEM 3 plate and forks kit
- FEM 3 forks with hydraulic side-shift (+/-100 mm)
- 800 L loading shovel
- 500/800 L concrete bucket (manual or hydraulic discharge)
- 500 L concrete mixing bucket (full hydraulic)
- Brick-holder basket
- Fixed hook on plate
- 2 m mechanical extension jib, 2,000 kg capacity
- 4 m mechanical or hydraulic extension jib, 900 kg capacity
- 3 t hydraulic hoist
- Fixed work man platform on GTH™-4017 EX
- Rotating and extendable work man platform on GTH™-4017 EX

United Kingdom

The Maltings, Wharf Road, Grantham NG31 6BH, T: +44 800 988 3739 (toll free), Fax +44 (0)1476 584334, Email AWP-InfoEurope@terex.com
Visit www.genielift.co.uk/locations to view our global locations list.

Worldwide Manufacturing And Distribution

Australia · Brazil · Caribbean · Central America · China · France · Germany · Italy · Japan · Korea · Mexico · Russia · Southeast Asia · Spain · Sweden · United Arab Emirates · United Kingdom · United States

Effective Date: February, 2013. Product specifications and prices are subject to change without notice or obligation. The photographs and/or drawings in this document are for illustrative purposes only. Refer to the appropriate Operator's Manual for instructions on the proper use of this equipment. Failure to follow the appropriate Operator's Manual when using our equipment or to otherwise act irresponsibly may result in serious injury or death. The only warranty applicable to our equipment is the standard written warranty applicable to the particular product and sale and we make no other warranty, express or implied. Products and services listed may be trademarks, service marks or trade names of Terex Corporation and/or their subsidiaries in the USA and many other countries. Genie is a registered trademark of Terex South Dakota, Inc. © 2013 Terex Corporation.

